

**Executive Director:** Bill Webster

**Board of Directors:** Pete Adams - Danny Ponder

PO Box 1396 **Physical Address:** 424 E. 7<sup>th</sup> St. Mountain Home, AR 72654-1396

**e-mail** [bdtwm@suddenlink.net](mailto:bdtwm@suddenlink.net) **website** [alphahouseshelter.org](http://alphahouseshelter.org)

**Phone/Fax** 870-425-8526

**Cell** 870-321-1355

Facebook <https://www.facebook.com/alphahouse2001/>

## On the Inside



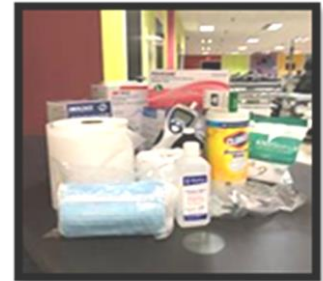
With the current COVID-19 epidemic, it has challenged us to step up our approach to what is needed to keep us safe. We check the men daily for any signs of COVID and any other change in their health. We have some men that are at high risk with diabetes and we closely monitor them for any change. The entire shelter is cleaned every day, floors, bathrooms, furniture, curtains, porches, sheds, and laundry room. We have hand sanitizer in every room as well as paper towels. We provide disposable rubber gloves for use in cleaning and cooking. We also provide lots of Kleenex.

## Giving Thanks



As we head into our 19<sup>th</sup> year, we are very thankful for all of you that have helped us walk out this journey so far. We have helped over 2,000 men see what the Love of Christ looks like up close and personal. We have made an abundance of new friends that have helped us through the smiles and the tears of those who have stayed here. So, I guess it is true that, "It takes a Village to raise the child". To the many who have supported the shelter over the years, you are like the "Good Samaritan". God touched his heart to help the broken man just like God touched your heart to help our homeless men. May the Lord Bless you and your love ones and keep you safe.

## What do we need?



### We could use:

1. Hand Sanitizer
2. Hand Soap
3. Paper Towels
4. Masks
5. Clorox Wipes
6. Kleenex
7. Disinfectant Spray
8. Pillows
9. Pillowcases
10. Winter blankets for beds
11. Twin Size Sheets
12. Paper Plates
13. Styrofoam Cups
14. Laundry Detergent



**Happy Thanksgiving to all**

*Please consider Alpha House when planning your Wills and Trusts*